



# Solutions for Adult Interdependent Living

## SAILing Lessons

*Understanding the Needs of the Individual*

# SAILing Lesson #4 Agenda



- 1 Welcome
- 2 SAILing Lessons for the Year
- 3 Success Story
- 4 Featured Speakers
- 5 Questions & Answers

# SAILing Lessons for the Year



Charting  
Your Course

Preparing  
to SAIL

Find Your  
Mates

Explore  
Housing Cabins

Assemble  
Your Crew

Coming  
Ashore

Running a  
Tight Ship



1

Sept. 14, 2022

## Understanding the Needs of the Individual

- Person Centered Planning | Individualized Plan of Service | Supports Intensity Scale

2

Nov. 09, 2022

## Finances and Cash Flow

- Supplemental Security Income | Social Security Disability Income | Food Assistance Program

3

Jan. 11, 2023

## Assemble Your Crew

- Employer of Record | Staffing Agency | Direct Care Giver | Community Builder

4

March 08, 2023

## Finding Your Mates and Coming Ashore

- Common Housing Vision | Compatibility | House Guidelines

5

May 10, 2023

## Running a Tight Ship

- Guardianship | Meetings with Partner Families

# SAILing Lesson #4 Agenda



- 1 Welcome
- 2 SAILing Lessons for the Year
- 3 Success Story**
- 4 Featured Speakers
- 5 Questions & Answers

## Success Story

A photograph of a three-story red brick house. The house features a prominent red door with a white frame and a small porch. The windows are dark-framed and arranged in a symmetrical pattern. A balcony with a black metal railing is visible on the upper floor. The house is surrounded by green trees and a clear sky.

# Adam, Jonathan, & Cody's Place

at Harrison House

Welcome to Harrison House in Evanston.

# Preparing to SAIL - Benefits Medicaid, Supports Coordinator and IPOS



1

- Apply for **SSI** at the Social Security Administration



- SSI provides automatic **Medicaid** eligibility



2

- After **Medicaid** is established, contact your local county Michigan Department of Health & Human Services office.



- Apply at your County's Community Mental Health service provider for "Adult Home Help Services."



3

- Schedule screening process / intake session to determine your Adult Child's needs and refer to **IDD Service Provider Agency**.
- Get assigned to Community Living Supports Coordinator.

Popular IDD Service Provider Agencies



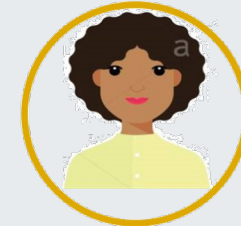
Supports Coordinator



4

- Work with your Supports Coordinator to develop an Individual Plan of Service – **IPOS**
- IPOS establishes the **amount** and **type** of Support Hours your Adult Child is entitled to.

Supports Coordinator



# Support Hrs.

# SAILing Lesson #4 Agenda



- 1 Welcome
- 2 SAILing Lessons for the Year
- 3 Success Story
- 4 Featured Speakers**
- 5 Questions & Answers

## Introducing our Featured Speakers

# Brande Klaus

LBSW, QIDP

SIS Trainer – Supports Need Assessment Center

MORC – **M**acomb **O**akland **R**egional **C**enter



# Lori Lindstrom

Senior Director of Community Supports

**C**ommunity **L**iving **S**ervices





# SAILing Lesson #4 Agenda



- 1 Welcome
- 2 SAILing Lessons for the Year
- 3 Success Story
- 4 Featured Speakers
- 5 Questions & Answers**